

# INNOVATION. PRECISION. TRUST.



## YUCHAI GENSET ENGINE

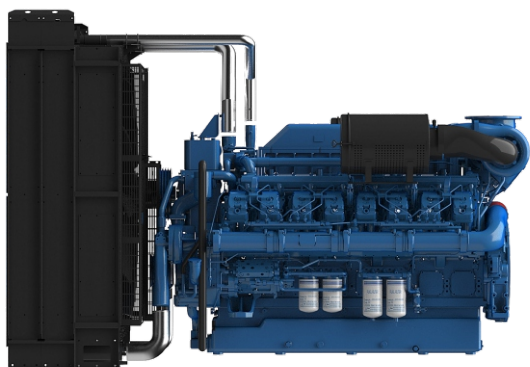
1520KW

Stage III

16 cylinders

## D1900V3-CR-TA-1652

The D1900V3-CR-TA-1652 represents cutting-edge power generation technology with 1350 kW of prime output capability. This 16-cylinder 52.3L engine features sophisticated water-air intercooling for optimal thermal efficiency and performance.



YUCHAIMOTOR.COM

### Main technical parameters

Number of cylinders	16
Configuration	V, 90°
Aspiration	Turbocharged water-air intercooled
Combustion system	Direct injection
Compression ratio	14:1
Bore × Stroke	152x 180
Displacement	52.3L
Rotation	Counterclockwise (viewed from the flywheel end)
Fuel system	High Pressure Common Rail
Governor	ECU
Stability at constant load (ISO 8528-5 Class G3)	± +/- 0.5 %
50/60Hz switchable operation	NO
Electric system	24V
Tropical Radiator mounted on the engine	Ambient 50°C
Flywheel Housing	SAE0 /18"
Lubrication Oil capacity	310L
Coolant capacity	547L
Emission class	Stage III

## The engine performance

### Gross Engine Output 50Hz

PRP	1520 kWm
ESP	1672 kWm

### Typical Generator Output 50Hz

PRP	1350 kWe
PRP	1688 kVA
ESP	1875 kVA

### Fuel consumption

STANDBY(ESP)	209.3 g/kWh	409.3 L/h
PRIME(PRP)	201.5 g/kWh	367.4 L/h
75% PRP (prime)	208.0 g/kWh	189.2 L/h
50% PRP (prime)	200.8 g/kWh	273.9 L/h
HVO synthetic fuel acceptance		

## Key Features

### Main Features

- ✓ Compact design
- ✓ Good power density
- ✓ Good load acceptance
- ✓ Durability
- ✓ Easy service & maintenance
- ✓ Low fuel consumption
- ✓ Wide selection of optional equipment
- ✓ Low noise
- ✓ Tailored cooling pack

### Standard scope of supply

- ✓ Cast iron cylinder block c/w separate cast iron cylinder heads
- ✓ Aluminum alloy pistons with gallery oil cooling
- ✓ Automatic belt tensioner, Lift eyes, Fixed front & rear suspension
- ✓ Radiator with mechanical pusher fan, thermostatically controlled
- ✓ Large capacity oil pan, spin-on full-flow oil filter, oil dipstick
- ✓ High-pressure common rail
- ✓ ECU management/monitoring
- ✓ Duplex fine fuel filters
- ✓ Rear mounted turbochargers
- ✓ Top/Side mounted air filters with restriction indicator
- ✓ 24V DC electric system with two starters 8.5kW each
- ✓ 55A charging alternator
- ✓ Heat isolated exhaust manifold

## Dimensions & Weight

### Dimensions & Weight

Including radiator (dry weight)

**3500**

Length (mm)

**2200**

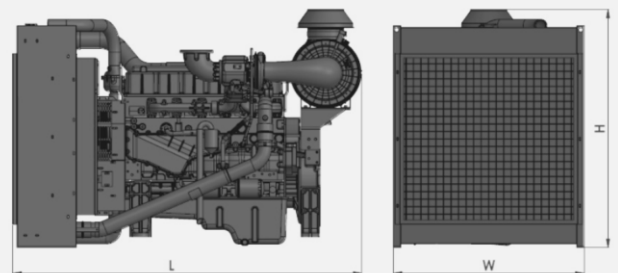
Width (mm)

**2470**

Height (mm)

**6520**

Weight (kg)



### POWER DEFINITIONS:

#### ESP = STANDBY POWER

According to ISO8528 is maximum power available during variable electrical power sequence up to 200h of operation per year, permissible output over 24h operation should not exceed 70% ESP

#### PRP = PRIME POWER

According to ISO8528 is maximum power engine can deliver continuously for unlimited number of hours per year permissible output over 24h operation should not exceed 70% PRP

**YUCHAIMOTOR.COM**

**INTERNATIONAL  
WARRANTY**

**Prime Power**

2 years with  
no hours limitations

**Standby Power**

4 years or max. 1000 hrs  
but not more than 300 hrs per year