

INNOVATION. PRECISION. TRUST.



YUCHAI GENSET ENGINE

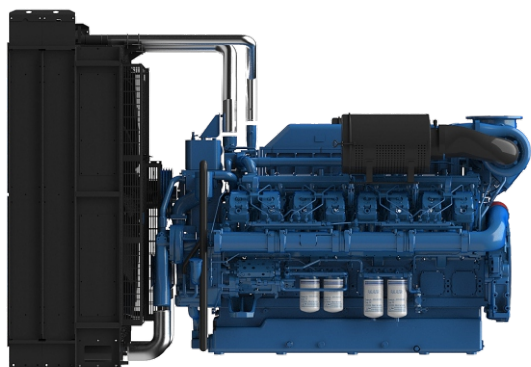
1680KW

Stage III

16 cylinders

D2063V3-CR-TA-1652

The D2063V3-CR-TA-1652 represents cutting-edge power generation technology with 1500 kW of prime output capability. This 16-cylinder 52.3L engine features sophisticated water-air intercooling for optimal thermal efficiency and performance.



YUCHAIMOTOR.COM

Main technical parameters

Number of cylinders	16
Configuration	V, 90°
Aspiration	Turbocharged water-air intercooled
Combustion system	Direct injection
Compression ratio	14:1
Bore × Stroke	152x 180
Displacement	52.3L
Rotation	Counterclockwise (viewed from the flywheel end)
Fuel system	High Pressure Common Rail
Governor	ECU
Stability at constant load (ISO 8528-5 Class G3)	± +/- 0.5 %
50/60Hz switchable operation	NO
Electric system	24V
Tropical Radiator mounted on the engine	Ambient 50°C
Flywheel Housing	SAE0 /18"
Lubrication Oil capacity	310L
Coolant capacity	547L
Emission class	Stage III

The engine performance

Gross Engine Output 50Hz

PRP	1680 kWm
ESP	1850 kWm

Typical Generator Output 50Hz

PRP	1500 kWe
PRP	1875 KVA
ESP	2063 KVA

Fuel consumption

STANDBY(ESP)	205.9 g/kWh	456.0 L/h
PRIME(PRP)	202.9 g/kWh	407.1 L/h
75% PRP (prime)	205.3 g/kWh	206.6 L/h
50% PRP (prime)	199.7 g/kWh	300.7 L/h
HVO synthetic fuel acceptance		

Key Features

Main Features

- ✓ Compact design
- ✓ Good power density
- ✓ Good load acceptance
- ✓ Durability
- ✓ Easy service & maintenance
- ✓ Low fuel consumption
- ✓ Wide selection of optional equipment
- ✓ Low noise
- ✓ Tailored cooling pack

Standard scope of supply

- ✓ Cast iron cylinder block c/w separate cast iron cylinder heads
- ✓ Aluminum alloy pistons with gallery oil cooling
- ✓ Automatic belt tensioner, Lift eyes, Fixed front & rear suspension
- ✓ Radiator with mechanical pusher fan, thermostatically controlled
- ✓ Large capacity oil pan, spin-on full-flow oil filter, oil dipstick
- ✓ High-pressure common rail
- ✓ ECU management/monitoring
- ✓ Duplex fine fuel filters
- ✓ Rear mounted turbochargers
- ✓ Top/Side mounted air filters with restriction indicator
- ✓ 24V DC electric system with two starters 8.5kW each
- ✓ 55A charging alternator
- ✓ Heat isolated exhaust manifold

Dimensions & Weight

Dimensions & Weight

Including radiator (dry weight)

3500

Length (mm)

2200

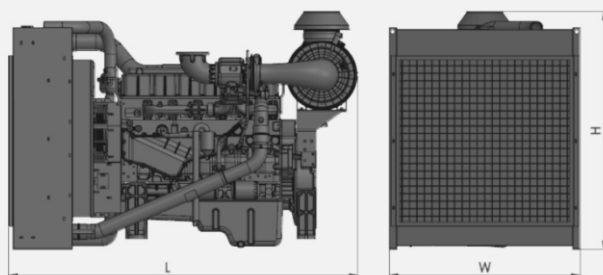
Width (mm)

2470

Height (mm)

6520

Weight (kg)



POWER DEFINITIONS:

ESP = STANDBY POWER

According to ISO8528 is maximum power available during variable electrical power sequence up to 200h of operation per year, permissible output over 24h operation should not exceed 70% ESP

PRP = PRIME POWER

According to ISO8528 is maximum power engine can deliver continuously for unlimited number of hours per year permissible output over 24h operation should not exceed 70% PRP

YUCHAIMOTOR.COM

**INTERNATIONAL
WARRANTY**

Prime Power

2 years with
no hours limitations

Standby Power

4 years or max. 1000 hrs
but not more than 300 hrs per year