

INNOVATION. PRECISION. TRUST.



YUCHAI GENSET ENGINE

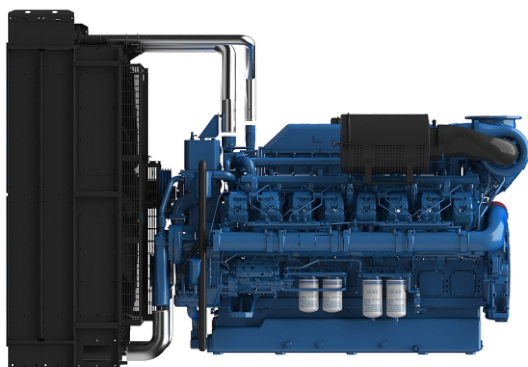
2405KW

Stage III

16 cylinders

D3000V3-EP-TA-16105

The D3000V3-EP-TA-16105 is a high-performance 16-cylinder diesel engine delivering 2200 kW of prime power output. With a 105.6L displacement and advanced engineering, this engine provides reliable power for diverse applications.



YUCHAIMOTOR.COM

Main technical parameters

Number of cylinders	16
Configuration	V, 90°
Aspiration	Turbocharged air-air intercooled
Combustion system	Direct injection
Compression ratio	13.5:1
Bore × Stroke	200x 210
Displacement	105.6L
Rotation	Counterclockwise (viewed from the flywheel end)
Fuel system	Electronic Pump Units
Governor	ECU
Stability at constant load (ISO 8528-5 Class G3)	± +/- 0.5 %
50/60Hz switchable operation	NO
Electric system	24V
Tropical Radiator mounted on the engine	Ambient 50°C
Flywheel Housing	SAE00 /21"
Lubrication Oil capacity	520L
Coolant capacity	850L
Emission class	Stage III

The engine performance

Gross Engine Output 50Hz

PRP	2405 kWm
ESP	2646 kWm

Typical Generator Output 50Hz

PRP	2200 kWe
PRP	2750 kVA
ESP	3000 kVA

Fuel consumption

STANDBY(ESP)	215.5 g/kWh	681.6 L/h
PRIME(PRP)	206.7 g/kWh	594.4 L/h
75% PRP (prime)	208.1 g/kWh	294.7 L/h
50% PRP (prime)	198.8 g/kWh	416.4 L/h

HVO synthetic fuel acceptance

Key Features

Main Features

- ✓ Compact design
- ✓ Good power density
- ✓ Good load acceptance
- ✓ Durability
- ✓ Easy service & maintenance
- ✓ Low fuel consumption
- ✓ Wide selection of optional equipment
- ✓ Low noise
- ✓ Tailored cooling pack (optional)

Standard scope of supply

- ✓ Cast iron cylinder block c/w separate cast iron cylinder heads
- ✓ Aluminum alloy pistons with gallery oil cooling
- ✓ Automatic belt tensioner, Lift eyes, Fixed front & rear suspension
- ✓ Radiator with mechanical pusher fan, thermostatically controlled (optional)
- ✓ Large capacity oil pan, spin-on full-flow oil filter, oil dipstick
- ✓ Electronic Pump Units fuel system
- ✓ ECU management/monitoring
- ✓ Duplex fine fuel filters
- ✓ Rear mounted turbochargers
- ✓ Top/Side mounted air filters with restriction indicator
- ✓ 24V DC electric system with two starters 11kW each
- ✓ 55A charging alternator ✓ Heat isolated exhaust manifold

Dimensions & Weight

Dimensions & Weight

Including radiator (dry weight)

5500

Length (mm)

2500

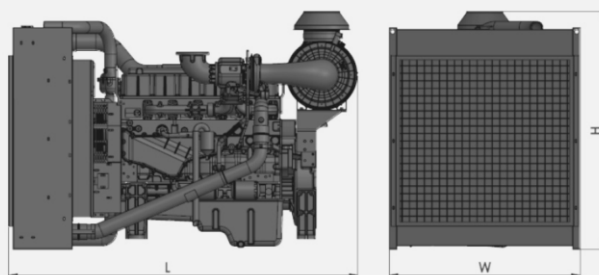
Width (mm)

2500

Height (mm)

14200

Weight (kg)



POWER DEFINITIONS:

ESP = STANDBY POWER

According to ISO8528 is maximum power available during variable electrical power sequence up to 200h of operation per year, permissible output over 24h operation should not exceed 70% ESP

PRP = PRIME POWER

According to ISO8528 is maximum power engine can deliver continuously for unlimited number of hours per year permissible output over 24h operation should not exceed 70% PRP

YUCHAIMOTOR.COM

**INTERNATIONAL
WARRANTY**

Prime Power

2 years with
no hours limitations

Standby Power

4 years or max. 1000 hrs
but not more than 300 hrs per year