

# INNOVATION. PRECISION. TRUST.



## YUCHAI GENSET ENGINE

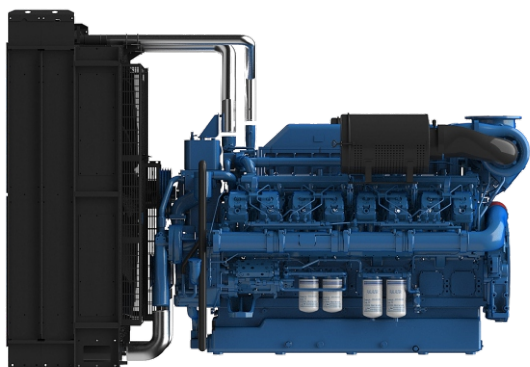
2673KW

Stage III

16 cylinders

## D3250V3-EP-TA-16105

The D3250V3-EP-TA-16105 is a high-performance 16-cylinder diesel engine delivering 2400 kW of prime power output. With a 105.6L displacement and advanced engineering, this engine provides reliable power for diverse applications.



### Main technical parameters

Number of cylinders	16
Configuration	V, 90°
Aspiration	Turbocharged air-air intercooled
Combustion system	Direct injection
Compression ratio	13.5:1
Bore × Stroke	200x 210
Displacement	105.6L
Rotation	Counterclockwise (viewed from the flywheel end)
Fuel system	Electronic Pump Units
Governor	ECU
Stability at constant load (ISO 8528-5 Class G3)	± +/- 0.5 %
50/60Hz switchable operation	NO
Electric system	24V
Tropical Radiator mounted on the engine	Ambient 50°C
Flywheel Housing	SAE00 /21"
Lubrication Oil capacity	520L
Coolant capacity	890L
Emission class	Stage III

YUCHAIMOTOR.COM

## The engine performance

### Gross Engine Output 50Hz

PRP	2673 kWm
ESP	2940 kWm

### Typical Generator Output 50Hz

PRP	2400 kWe
PRP	3000 kVA
ESP	3250 kVA

### Fuel consumption

STANDBY(ESP)	217.2 g/kWh	764.8 L/h
PRIME(PRP)	210.5 g/kWh	673.9 L/h
75% PRP (prime)	217.3 g/kWh	347.8 L/h
50% PRP (prime)	205.6 g/kWh	493.6 L/h
HVO synthetic fuel acceptance		

## Key Features

### Main Features

- ✓ Compact design
- ✓ Good power density
- ✓ Good load acceptance
- ✓ Durability
- ✓ Easy service & maintenance
- ✓ Low fuel consumption
- ✓ Wide selection of optional equipment
- ✓ Low noise
- ✓ Tailored cooling pack (optional)

### Standard scope of supply

- ✓ Cast iron cylinder block c/w separate cast iron cylinder heads
- ✓ Aluminum alloy pistons with gallery oil cooling
- ✓ Automatic belt tensioner, Lift eyes, Fixed front & rear suspension
- ✓ Radiator with mechanical pusher fan, thermostatically controlled (optional)
- ✓ Large capacity oil pan, spin-on full-flow oil filter, oil dipstick
- ✓ Electronic Pump Units fuel system
- ✓ ECU management/monitoring
- ✓ Duplex fine fuel filters
- ✓ Rear mounted turbochargers
- ✓ Top/Side mounted air filters with restriction indicator
- ✓ 24V DC electric system with two starters 11kW each
- ✓ 55A charging alternator ✓ Heat isolated exhaust manifold

## Dimensions & Weight

### Dimensions & Weight

Including radiator (dry weight)

**5500**

Length (mm)

**2500**

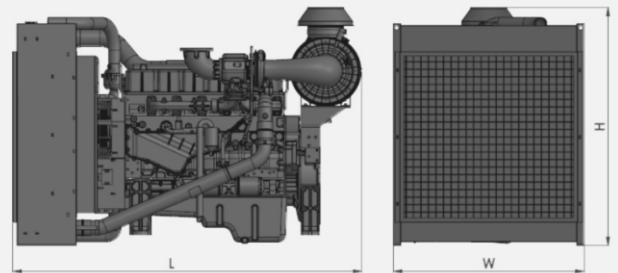
Width (mm)

**2500**

Height (mm)

**14200**

Weight (kg)



### POWER DEFINITIONS:

#### ESP = STANDBY POWER

According to ISO8528 is maximum power available during variable electrical power sequence up to 200h of operation per year, permissible output over 24h operation should not exceed 70% ESP

#### PRP = PRIME POWER

According to ISO8528 is maximum power engine can deliver continuously for unlimited number of hours per year permissible output over 24h operation should not exceed 70% PRP

**YUCHAIMOTOR.COM**

**INTERNATIONAL  
WARRANTY**

**Prime Power**

2 years with  
no hours limitations

**Standby Power**

4 years or max. 1000 hrs  
but not more than 300 hrs per year