

# INNOVATION. PRECISION. TRUST.



561KW

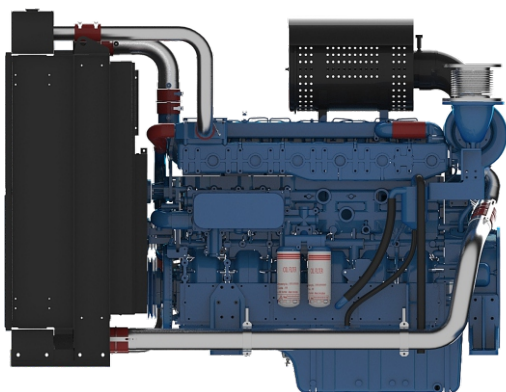
Stage III

6 cylinders

## YUCHAI GENSET ENGINE

## D688R3-EP-TA-620

Engineered for superior performance, the D688R3-EP-TA-620 delivers 500 kW of prime power with advanced turbocharged technology. This 6-cylinder 19.6L diesel engine combines high efficiency with robust construction for demanding power generation needs.



### Main technical parameters

Number of cylinders	6
Configuration	Vertical, in-line
Aspiration	Turbocharged and intercooled
Combustion system	Direct injection
Compression ratio	14:1
Bore × Stroke	152x 180
Displacement	19.6L
Rotation	Counterclockwise (viewed from the flywheel end)
Fuel system	Electronic pump injectors
Governor	Electronic
Stability at constant load (ISO 8528-5 Class G3)	± +/- 0.5 %
50/60Hz switchable operation	NO
Electric system	24V
Tropical Radiator mounted on the engine	Ambient 50°C
Flywheel Housing	SAE1 /14"
Lubrication Oil capacity	56L
Coolant capacity	130L
Emission class	Stage III

[YUCHAIMOTOR.COM](http://YUCHAIMOTOR.COM)

## The engine performance

### Gross Engine Output 50Hz

PRP	561 kWm
ESP	616 kWm

### Typical Generator Output 50Hz

PRP	500 kWe
PRP	625 kVA
ESP	688 kVA

### Fuel consumption

STANDBY(ESP)	221.6 g/kWh	163.8 L/h
PRIME(PRP)	213.2 g/kWh	143.2 L/h
75% PRP (prime)	212.1 g/kWh	71.3 L/h
50% PRP (prime)	206.1 g/kWh	103.8 L/h

HVO synthetic fuel acceptance

## Key Features

### Main Features

- ✓ Compact design
- ✓ Good power density
- ✓ Durability
- ✓ Easy service & maintenance
- ✓ Low fuel consumption
- ✓ Wide selection of optional equipment
- ✓ Low noise
- ✓ Tailored cooling pack

### Standard scope of supply

- ✓ Cast iron cylinder block c/w separate cast iron cylinder head
- ✓ Aluminum alloy pistons with gallery oil cooling
- ✓ Automatic belt tensioner, Lift eyes, Fixed front suspension
- ✓ Radiator with mechanical pusher fan, thermostatically controlled
- ✓ Large capacity oil pan, spin-on full-flow oil filter, oil dipstick
- ✓ Electronic pump-injectors, Electronic governor
- ✓ Duplex fine fuel filters
- ✓ End mounted turbocharger
- ✓ Top mounted air filter with restriction indicator
- ✓ 24V DC electric system with two starters 7.5kW each
- ✓ 55A charging alternator
- ✓ Heat isolated exhaust manifold

## Dimensions & Weight

### Dimensions & Weight

Including radiator (dry weight)

**2257**

Length (mm)

**1585**

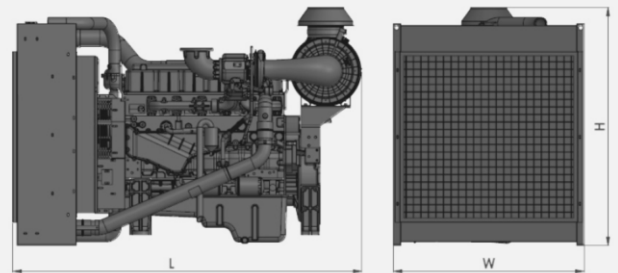
Width (mm)

**1801**

Height (mm)

**2630**

Weight (kg)



### POWER DEFINITIONS:

#### ESP = STANDBY POWER

According to ISO8528 is maximum power available during variable electrical power sequence up to 200h of operation per year, permissible output over 24h operation should not exceed 70% ESP

#### PRP = PRIME POWER

According to ISO8528 is maximum power engine can deliver continuously for unlimited number of hours per year permissible output over 24h operation should not exceed 70% PRP

**YUCHAIMOTOR.COM**

**INTERNATIONAL  
WARRANTY**

**Prime Power**

2 years with  
no hours limitations

**Standby Power**

4 years or max. 1000 hrs  
but not more than 300 hrs per year