

INNOVATION. PRECISION. TRUST.



605KW

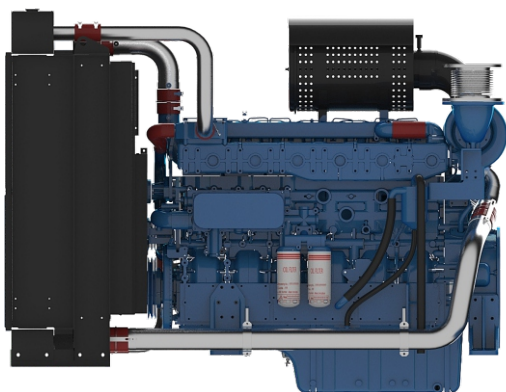
Stage III

6 cylinders

YUCHAI GENSET ENGINE

D750R3-EP-TA-620

Engineered for superior performance, the D750R3-EP-TA-620 delivers 550 kW of prime power with advanced turbocharged technology. This 6-cylinder 19.6L diesel engine combines high efficiency with robust construction for demanding power generation needs.



Main technical parameters

Number of cylinders	6
Configuration	Vertical, in-line
Aspiration	Turbocharged and intercooled
Combustion system	Direct injection
Compression ratio	14:1
Bore × Stroke	152x 180
Displacement	19.6L
Rotation	Counterclockwise (viewed from the flywheel end)
Fuel system	Electronic pump injectors
Governor	Electronic
Stability at constant load (ISO 8528-5 Class G3)	± +/- 0.5 %
50/60Hz switchable operation	NO
Electric system	24V
Tropical Radiator mounted on the engine	Ambient 50°C
Flywheel Housing	SAE1 /14"
Lubrication Oil capacity	56L
Coolant capacity	130L
Emission class	Stage III

YUCHAIMOTOR.COM

The engine performance

Gross Engine Output 50Hz

PRP	605 kWm
ESP	665 kWm

Typical Generator Output 50Hz

PRP	550 kWe
PRP	688 kVA
ESP	750 kVA

Fuel consumption

STANDBY(ESP)	218.6 g/kWh	174.1 L/h
PRIME(PRP)	213.0 g/kWh	154.3 L/h
75% PRP (prime)	205.4 g/kWh	74.4 L/h
50% PRP (prime)	207.9 g/kWh	112.9 L/h

HVO synthetic fuel acceptance

Key Features

Main Features

- ✓ Compact design
- ✓ Good power density
- ✓ Durability
- ✓ Easy service & maintenance
- ✓ Low fuel consumption
- ✓ Wide selection of optional equipment
- ✓ Low noise
- ✓ Tailored cooling pack

Standard scope of supply

- ✓ Cast iron cylinder block c/w separate cast iron cylinder head
- ✓ Aluminum alloy pistons with gallery oil cooling
- ✓ Automatic belt tensioner, Lift eyes, Fixed front suspension
- ✓ Radiator with mechanical pusher fan, thermostatically controlled
- ✓ Large capacity oil pan, spin-on full-flow oil filter, oil dipstick
- ✓ Electronic pump-injectors, Electronic governor
- ✓ Duplex fine fuel filters
- ✓ End mounted turbocharger
- ✓ Top mounted air filter with restriction indicator
- ✓ 24V DC electric system with two starters 7.5kW each
- ✓ 55A charging alternator
- ✓ Heat isolated exhaust manifold

Dimensions & Weight

Dimensions & Weight

Including radiator (dry weight)

2257

Length (mm)

1585

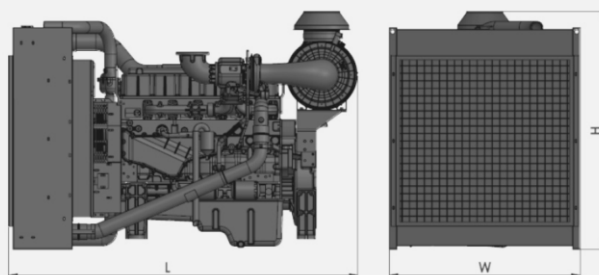
Width (mm)

1801

Height (mm)

2630

Weight (kg)



POWER DEFINITIONS:

ESP = STANDBY POWER

According to ISO8528 is maximum power available during variable electrical power sequence up to 200h of operation per year, permissible output over 24h operation should not exceed 70% ESP

PRP = PRIME POWER

According to ISO8528 is maximum power engine can deliver continuously for unlimited number of hours per year permissible output over 24h operation should not exceed 70% PRP

YUCHAIMOTOR.COM

**INTERNATIONAL
WARRANTY**

Prime Power

2 years with
no hours limitations

Standby Power

4 years or max. 1000 hrs
but not more than 300 hrs per year